

Global Health Risks

FIELD SCHOOL IN GLOBAL HEALTH RISKS

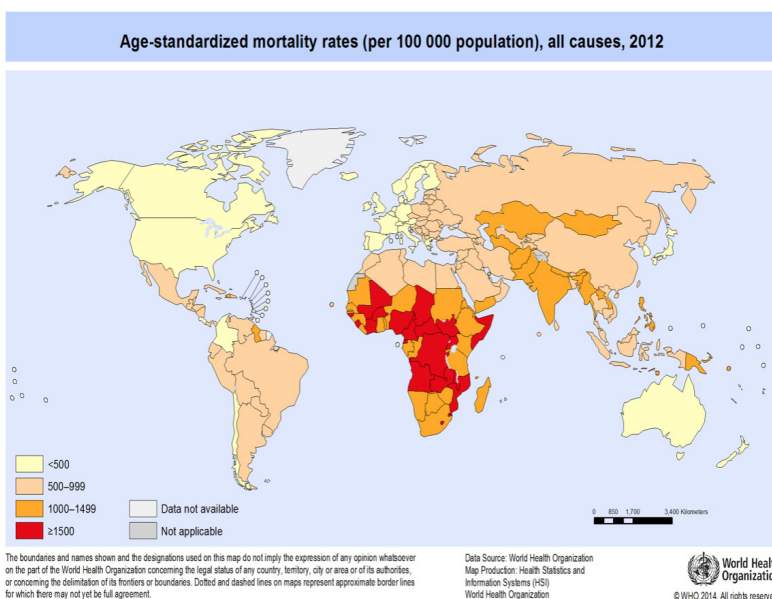
FIELD SCHOOL SITE: Athens, Greece

WHO SHOULD ATTEND: students in Public Health, Nursing, Medical, Social Work, International Relations and Global Health studies.

DURATION: 2 or 4 weeks - Summer 2017

Populations experiencing conflict, poverty, environmental disaster or rampant urbanisation face substantial health degradation and disease risks. According to the World Health Organization, over half of the world's population is at direct contact risk of several endemic diseases; a significant new infectious disease has been discovered each year over the past 40 years. Millions of people around the world are currently experiencing health insecurity and death from a range of diseases. Governments cannot cope alone, with the result that the public sphere of global health is dramatically increasing its importance for health professionals and public policy.

Health professionals now operate in a global health market, with policies, regulations, pandemics, careers, labour, technology, research, funding all operating significantly at the global scale. Understanding how global health policy is shaped, assessing the interplay between domestic and global health issues, and evaluating the career opportunities available across the expanding global health sector are now necessary skills for uni-versity students shaping their future.



“The concept of glocalization - thinking globally but acting locally - will move to the forefront in 2014 and beyond. In the face of change and innovation, the ability to reach into global jurisdictions to learn and mitigate the risk of local change will be invaluable.” Deloitte ‘2014 Global Health Care Outlook’

Who should attend? This Field School is appropriate for students in public health, nursing, medical, social work, and international relations studies. This experience is designed to provide an intensive introduction to the Global Health sector and its networks, allowing students to present a 'focus' or 'special interest' during their applications to post-graduate training.

Field School Site: The field school is based in Athens Greece. Whether through its pharmaceutical companies, its public policy practices, or its institutions and NGOs shaping new norms and approaches, Athens provides a laboratory for studying the cutting edge of global health today. This Field School is designed to unlock the organizations, people and policies that are shaping the future of Global Health, and to help foresighted students access this exciting sector.

Through extensive practical training, case studies, group work, speakers, visits and a final practicum project, undergraduates in the health and social science disciplines will be exposed to the current state of global health policy, and begin to network with those shaping its future.

Structure of the Field School: The Field School is composed of two study blocks:

Block One lasts for two weeks, providing an intensive course entitled 'GLOBAL HEALTH RISKS'. This 3-credit course is an introduction to the current issues, challenges, activities, institutions and policies shaping Global Health today. Students will finish the course with a detailed understanding of the Global Health sector and its interaction with domestic and local health policies.

Block Two lasts for two weeks, giving participants in the Field School the opportunity to take a practicum with a local NGO to learn about the workings of the organisation. Whether Ebola, HIV/AIDS, SARS or Cholera, vast populations in conflict zones or areas of environmental disaster are at risk from the spread of infectious diseases. How do we best handle them, and what global, national and local policies work best? How do health workers intervene, while protecting themselves and their own communities?

Field School Schedule - Summer 2017:

- Block one starts in Athens, Greece on Sunday 11 June 2017
- Block one ends on Saturday 24 June 2017
- Block two starts on Sunday 25 June 2017
- Block two ends on Saturday 08 July 2017

Teaching Methods:

Global case based; practicums; lots of speakers and visits; group work; action learning.

Intensive weekly schedule: 4-hour morning sessions (9AM-1PM) Mon-Thu; group work and seminars/speakers/tutorials in 2.5-hour afternoon slot Mon-Thu; some evening speakers or videos/movies (thus minimum 50 in-class contact hours, with readings and web/group work outside of class time, per course)



FIELD SCHOOL IN GLOBAL HEALTH RISKS

Cost and minimum number of participants:

Block One: \$2,500

Block Two: \$2,500

Cost includes the following:

3 to 6 semester hours of tuition

Orientation program on arrival

Welcome lunch and farewell dinner

On-site student services support

Accommodation: twin or triple rooms in three-star hotel, breakfast included

The price does not include:

Airfare to/from US

Airport transfers

Travel and medical insurance

Meal plan or food allowance

The field school will not be offered for less than 10 students.

Admission policies and procedures

To enrol in this program students are required to:

Complete the LEB application form (available at www.lebeducation.co.uk)

Pay \$1,500 deposit by March 31st.

Contact Information

Dr Nikos Tsorakidis, Executive Director

nikos.tsorakidis@lebeducation.co.uk

Accreditation and Transcripts

Transcripts are issued by Maryville University, St. Louis, Missouri, with which LEB has a School of Record agreement. Maryville holds multiple accreditations, including North Central regional accreditation and the ACBSP for Business programs. LEB Education issues transcripts based on the U.S. semester credit system. Courses carry three semester hours of credit, based on 45 hours of classroom and course excursion contact time.

Cancelation and refund policy

For students who cancel before March 31st, LEB will refund the deposit (transaction costs will be deducted from the refund). For students who cancel after March 31st, the \$1,500 deposit will be forfeited.

For programme enquiries, please contact:

LEB EDUCATION
40 MELTON STREET
LONDON
NW1 2FD

INFO@LEBEDUCATION.CO.UK
LEBEDUCATION.CO.UK

